

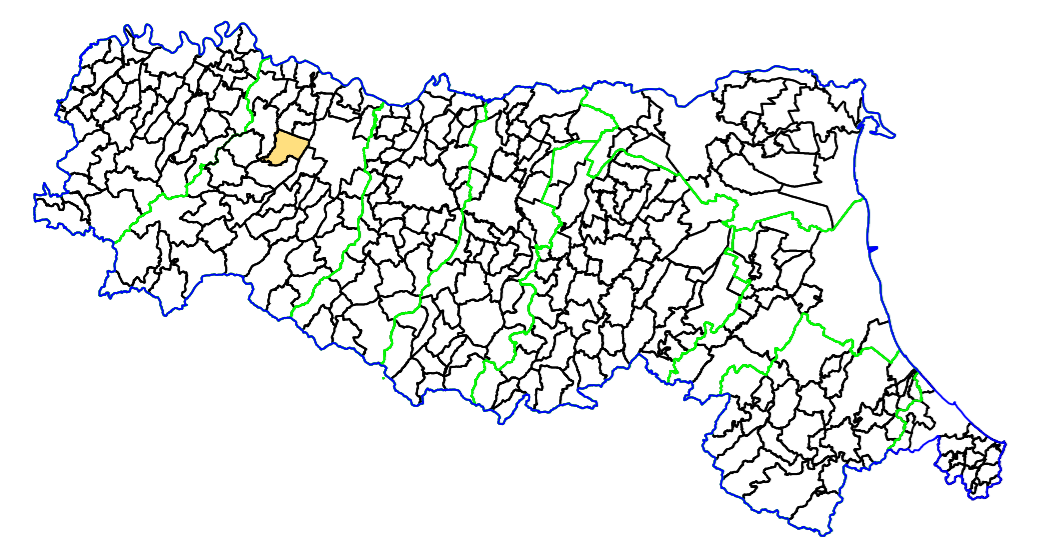
MICROZONAZIONE SISMICA

CARTA DELLE INDAGINI

scala 1 : 5.000

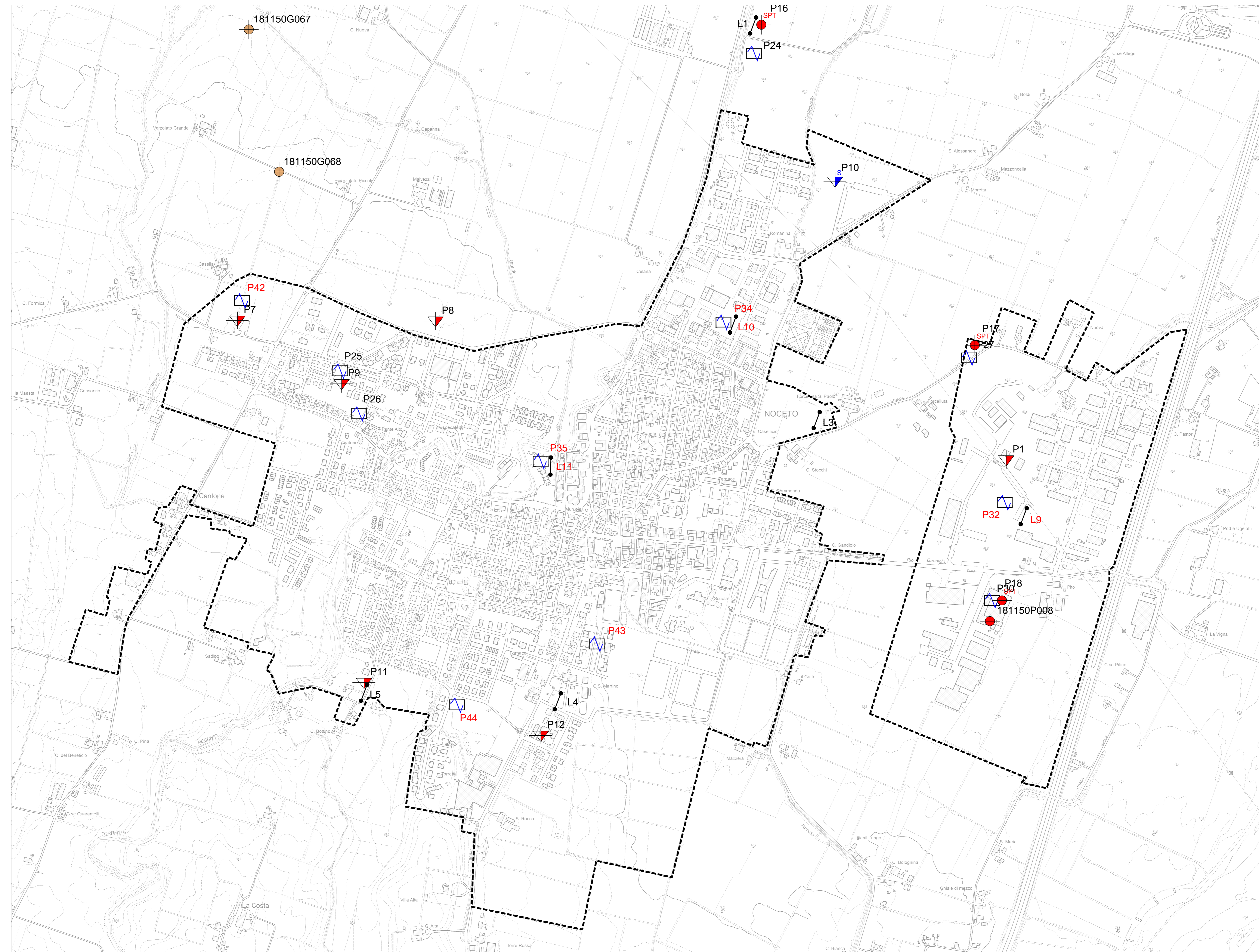
TAV. 01

Regione Emilia-Romagna
Comune di Noceto

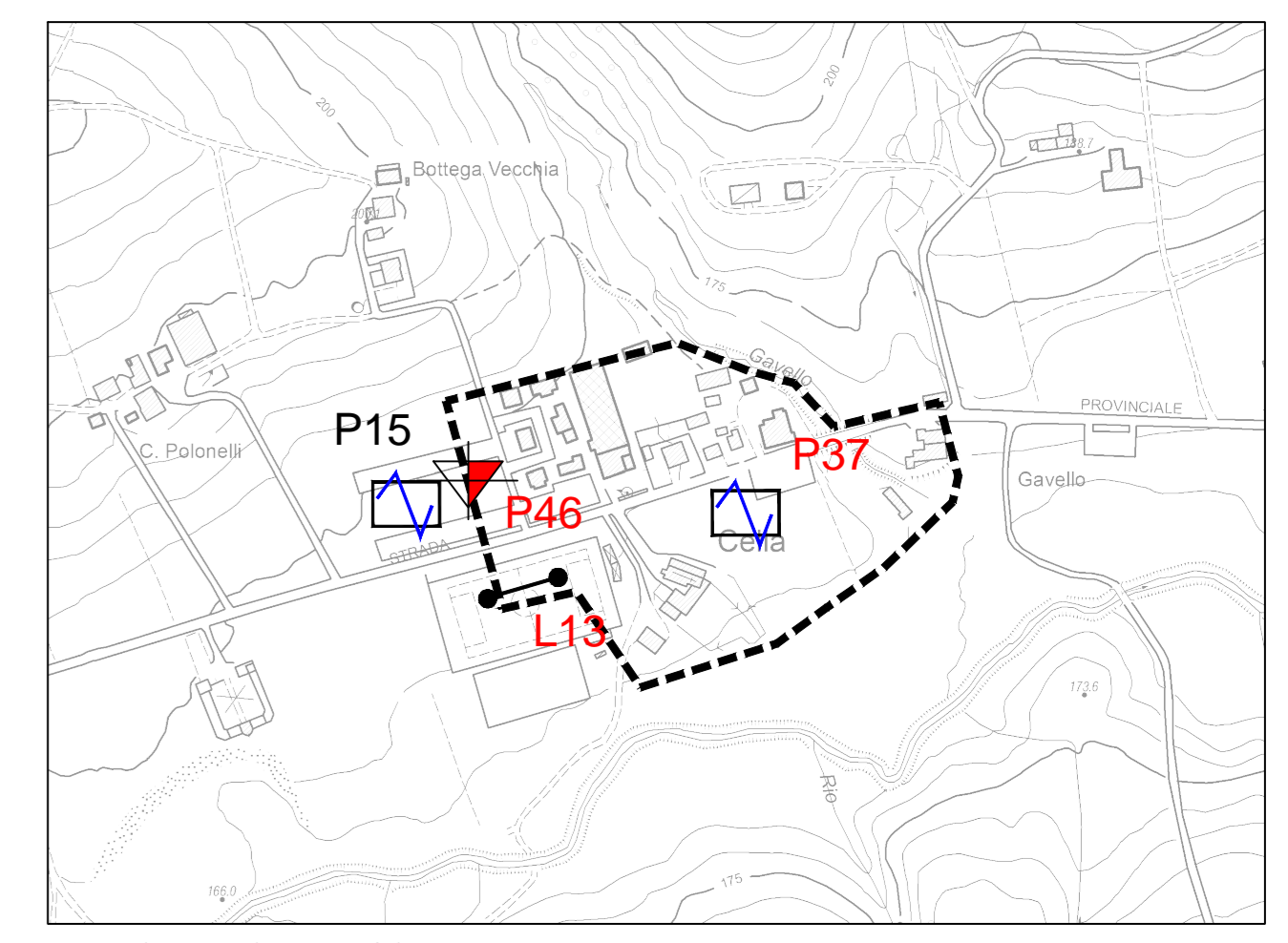


Regione	Soggetto realizzatore AMBITER S.p.A. Via Noceto, 5/A - 41126 Parma (PR) Tel. 0521-244331 - Fax 0521-244334 e-mail: info@ambiter.it www.ambiter.it	Data luglio 2017
---------	---	---------------------

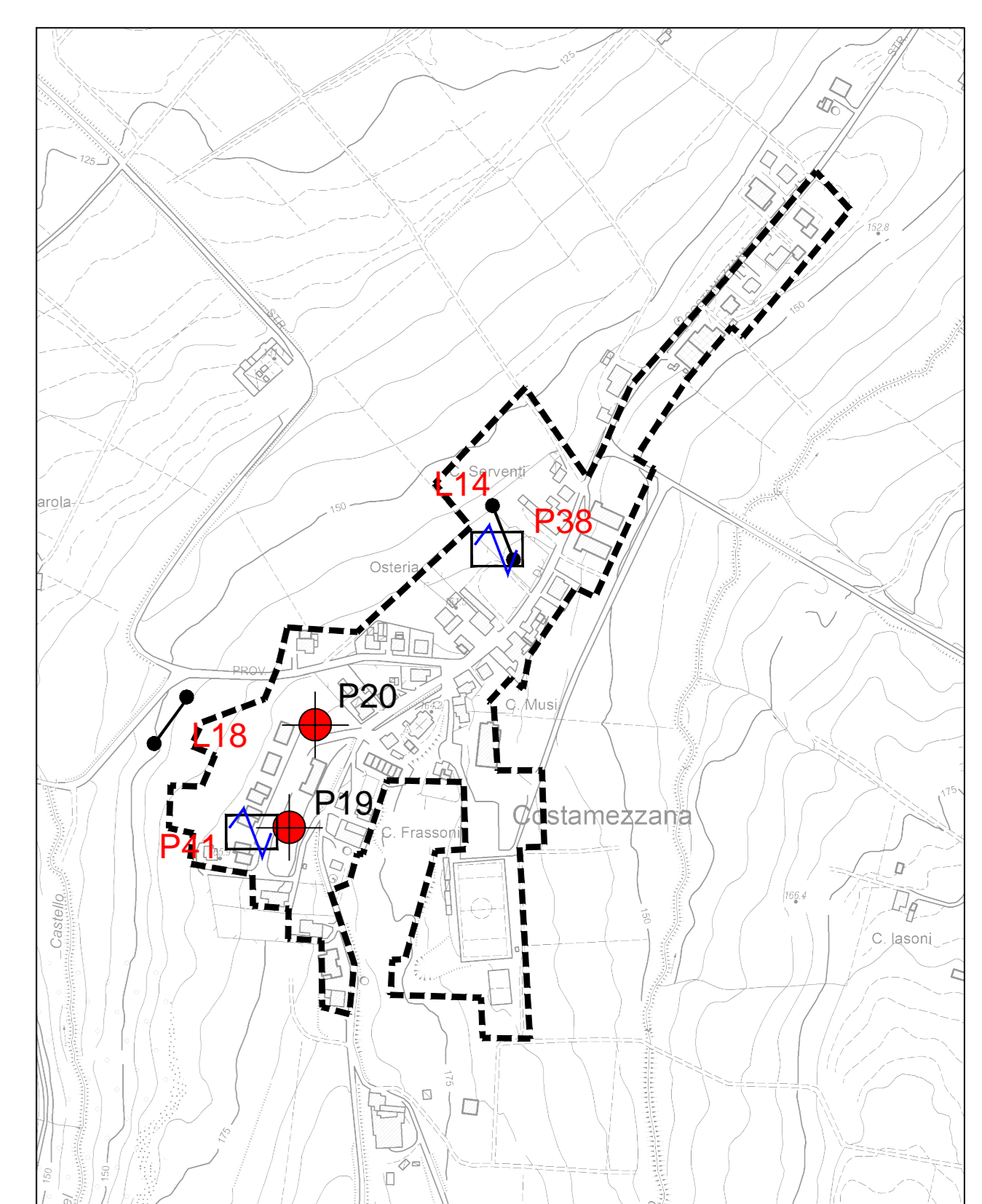
- LEGENDA**
- Prova penetrometrica statica CPT
 - Prova penetrometrica dinamica super pesante
 - Sondaggio a carotaggio continuo
 - Prova penetrometrica in foro (SPT)
 - Indagine geofisica MASW/ReMi (con la sigla in rosso sono indicate le prove realizzate ex-novo)
 - Analisi dei microtremori HVSr (con la sigla in rosso sono indicate le prove realizzate ex-novo per il presente Studio di MS)
 - Ambito interessato dallo studio di microzonazione sismica
 - Confine comunale



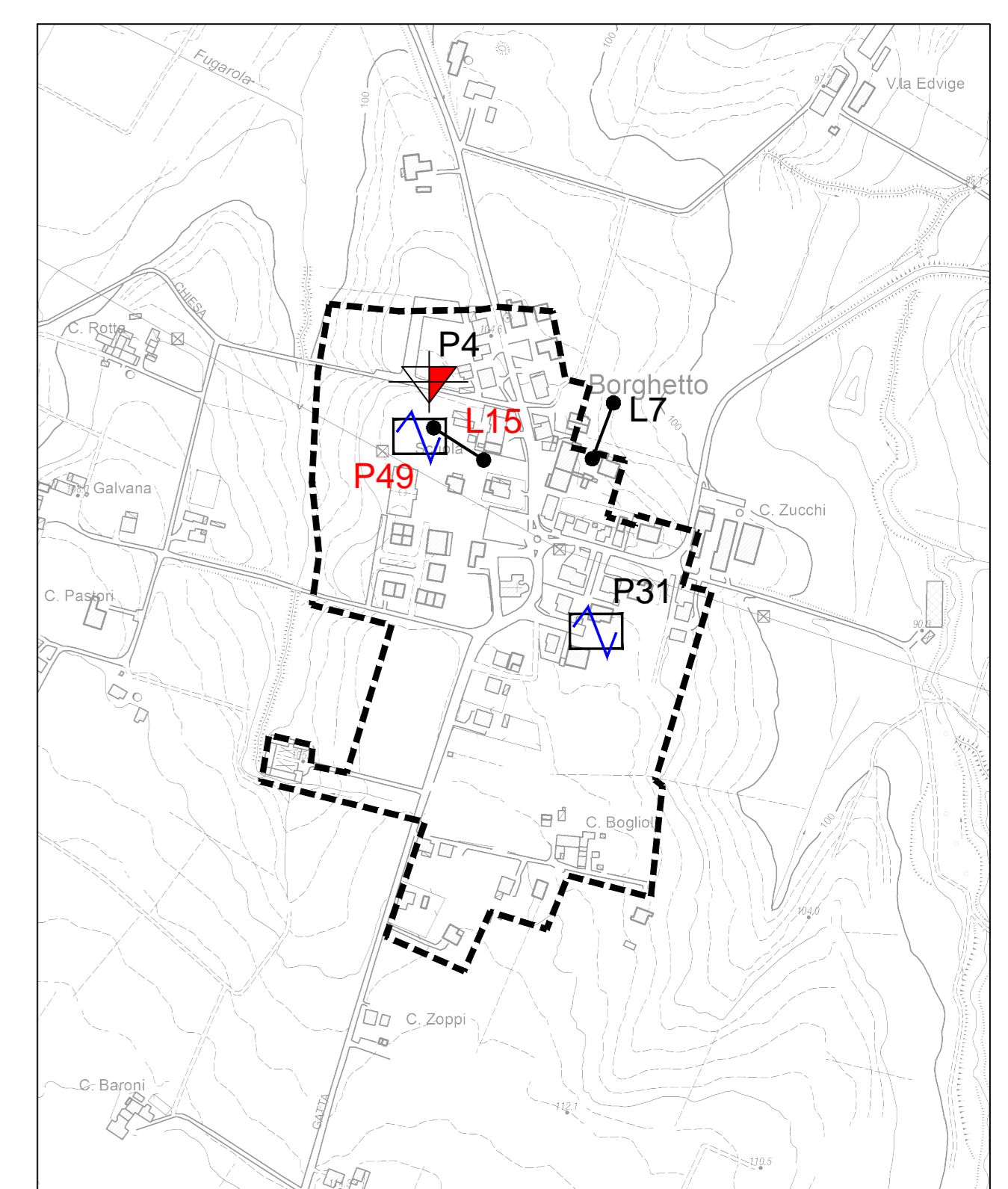
NOCETO CAPOLUOGO (b)



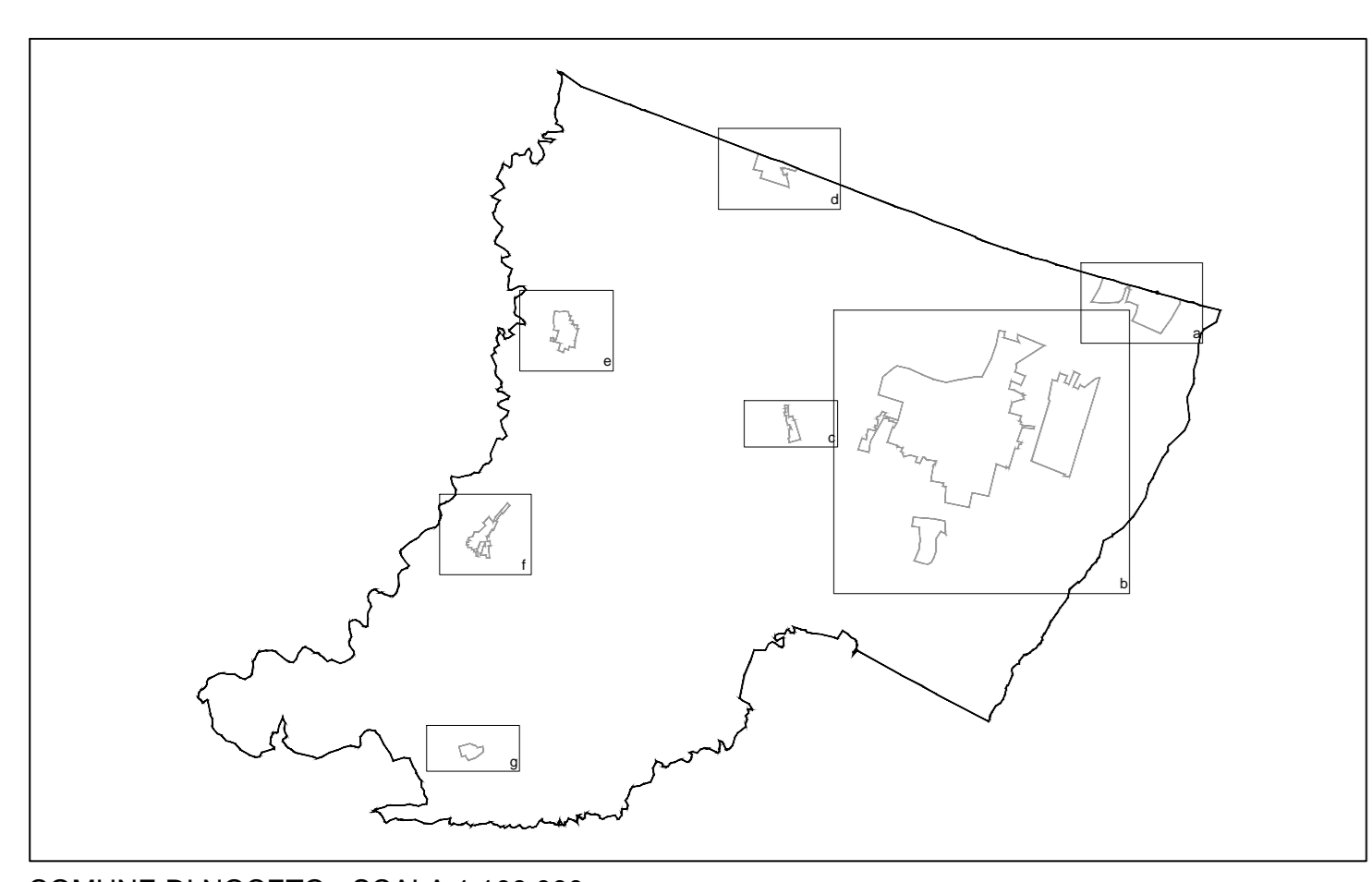
FRAZIONE DI CELLA - SCALA 1:10.000 (g)



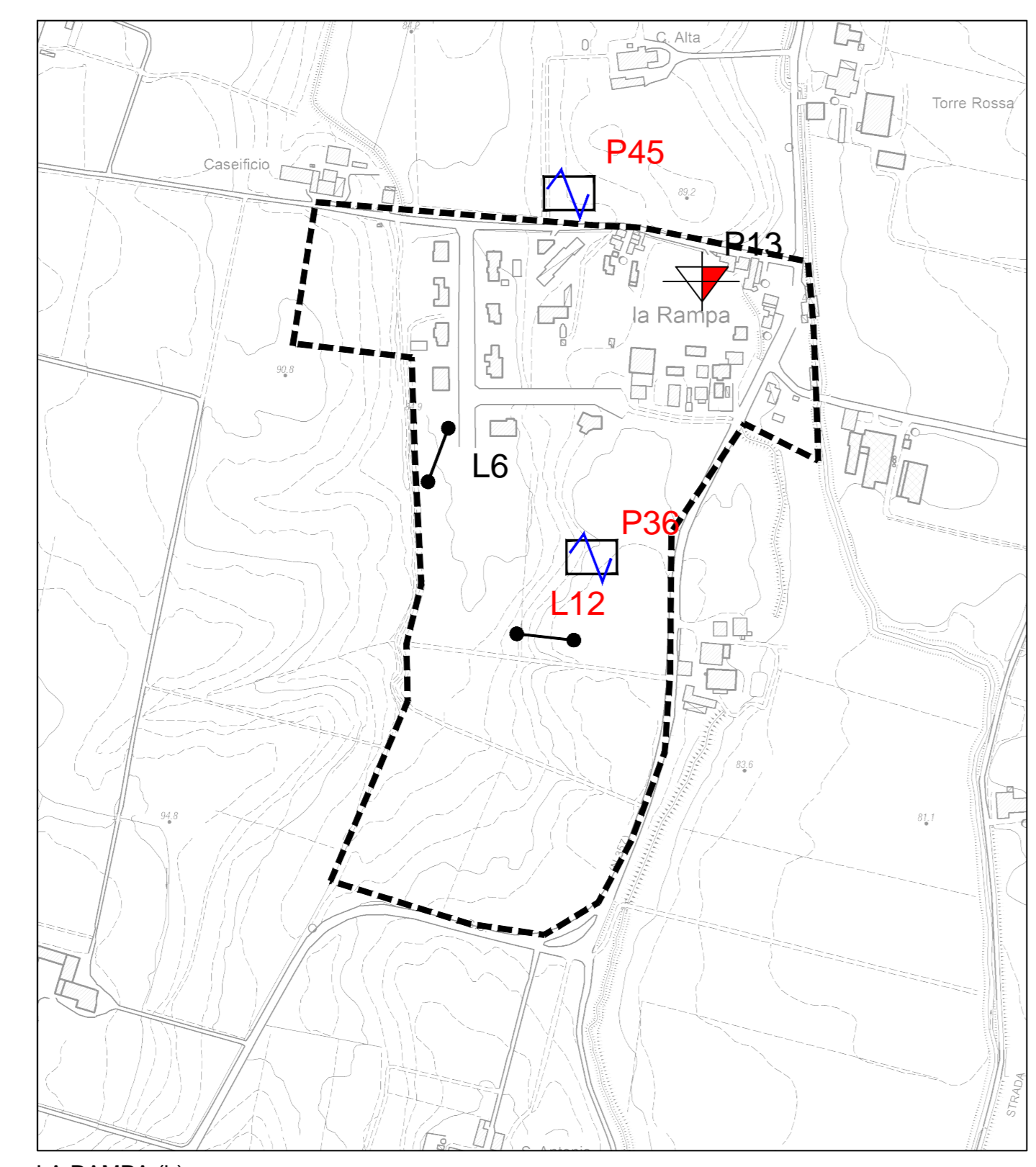
COSTAMEZZANA (f)



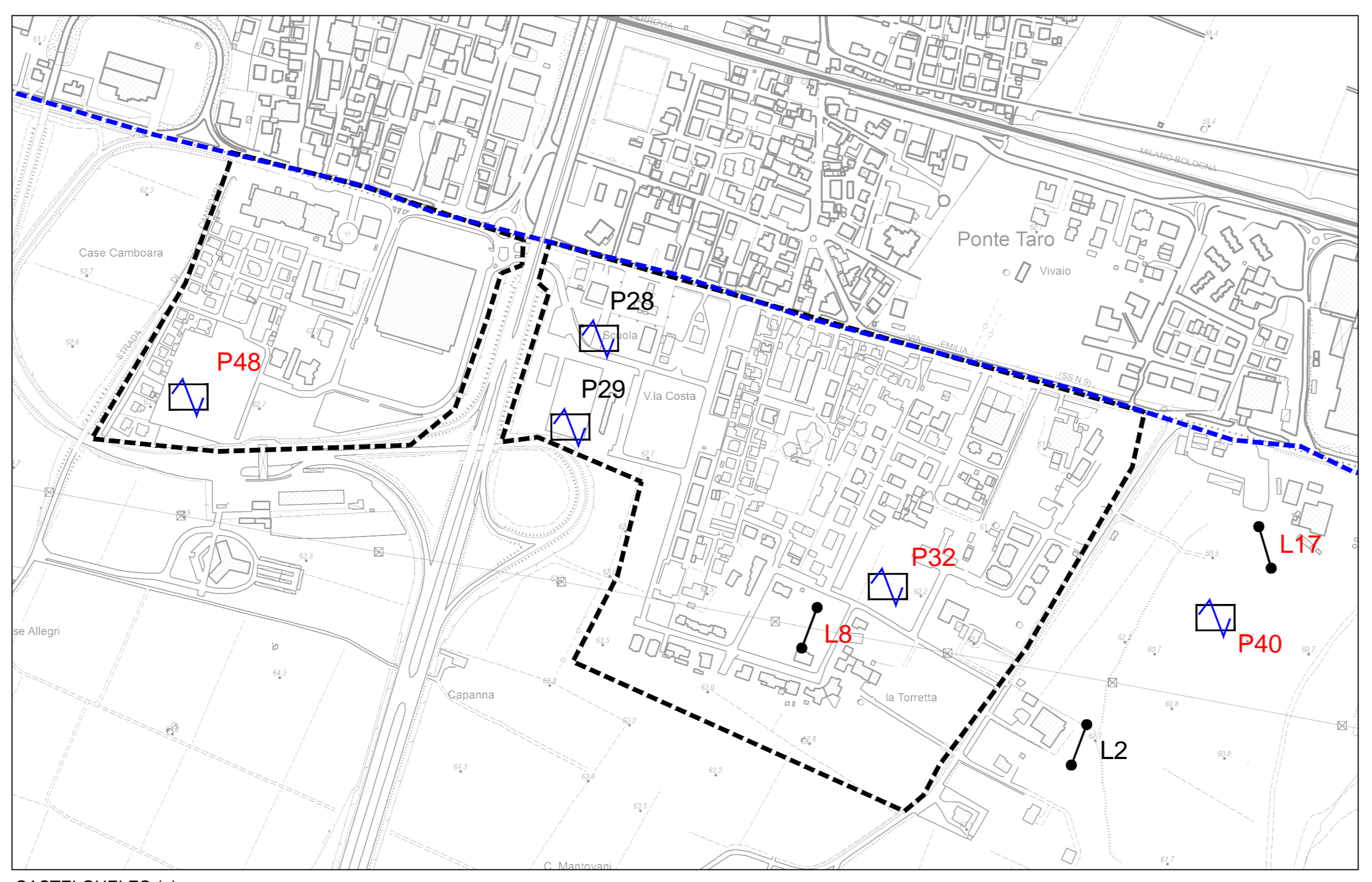
BORGHETTO (e)



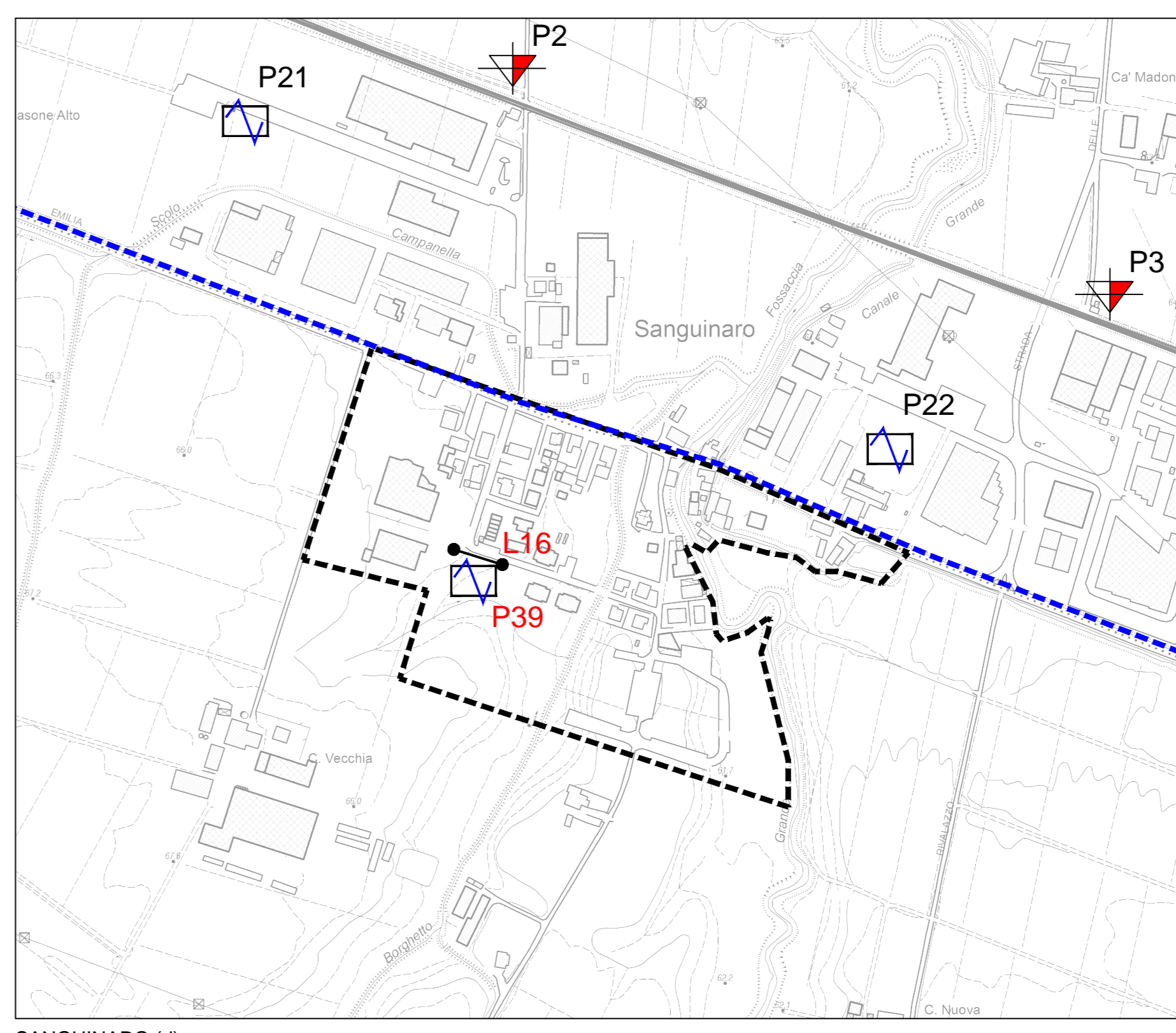
COMUNE DI NOCETO - SCALA 1:100.000



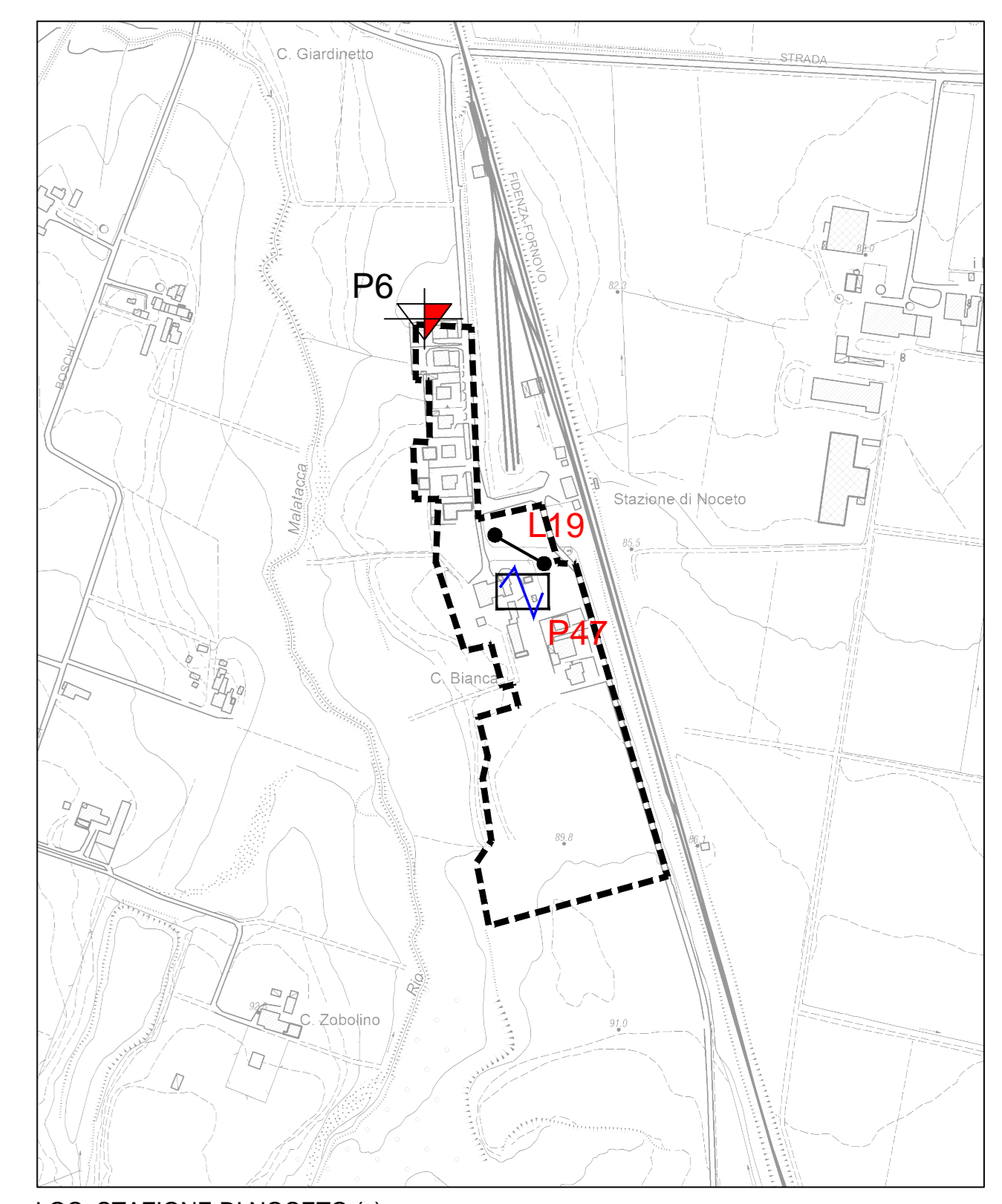
LA RAMPA (b)



CASTELGUELFO (a)



SANGUINARO (d)



LOC. STAZIONE DI NOCETO (c)