

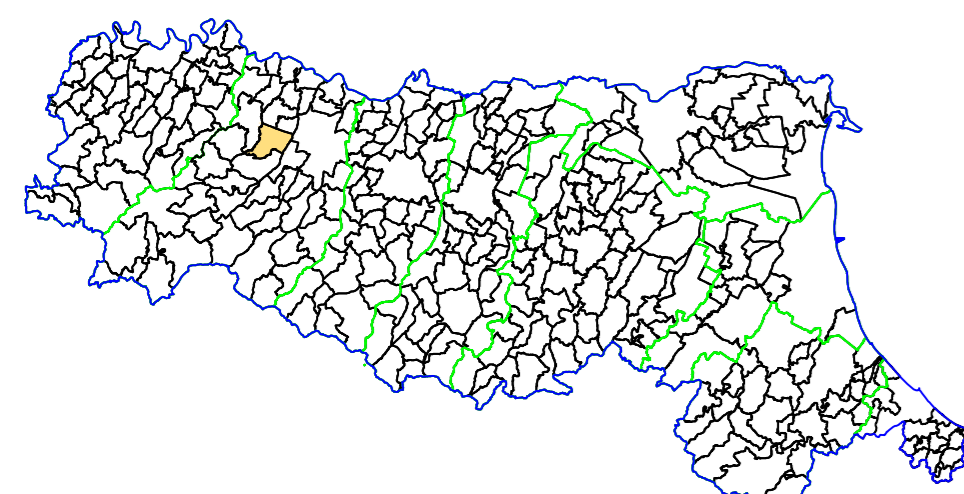
MICROZONAZIONE SISMICA

CARTA DI MICROZONAZIONE SISMICA
F.A. PGA

scala 1 : 5.000

TAV. 07a

Regione Emilia-Romagna
Comune di Noceto



Regione	Soggetto realizzatore	Data
Emilia-Romagna	AMBITER S.p.A. società di ingegneria ambientale Via Noceto, S.A. - 41126 Parma PNO Tel. 0521 740210 - Fax 0521 740214 e-mail: info@ambiter.it P.I. 01500000366-ambiter	luglio 2017

LEGENDA

--- Ambito interessato dallo studio di microzonazione sismica

--- Confine comunale

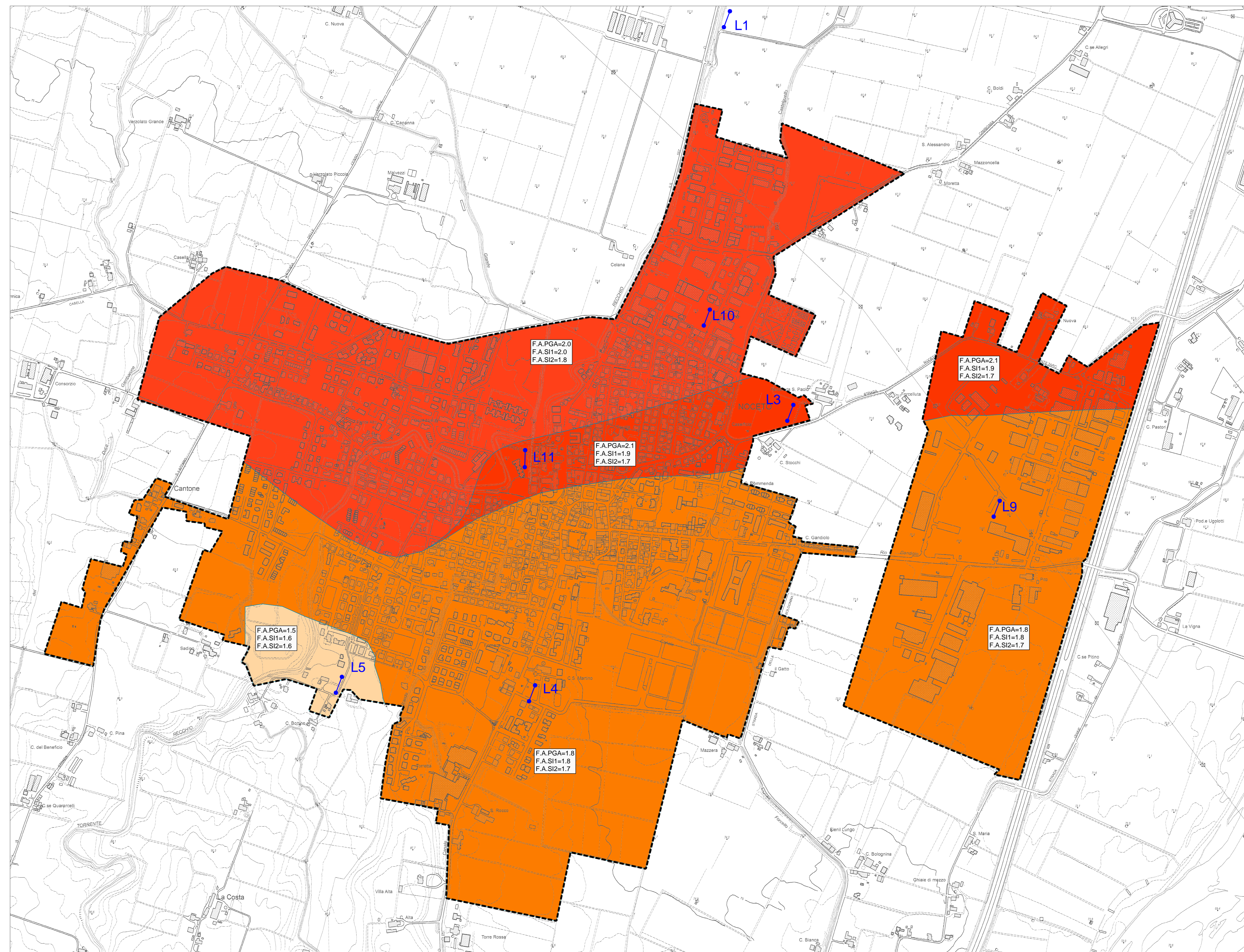
Indagine geotecnica MASW/REMI

ZONE STABILI SUSCETTIBILI DI AMPLIFICAZIONI LOCALI

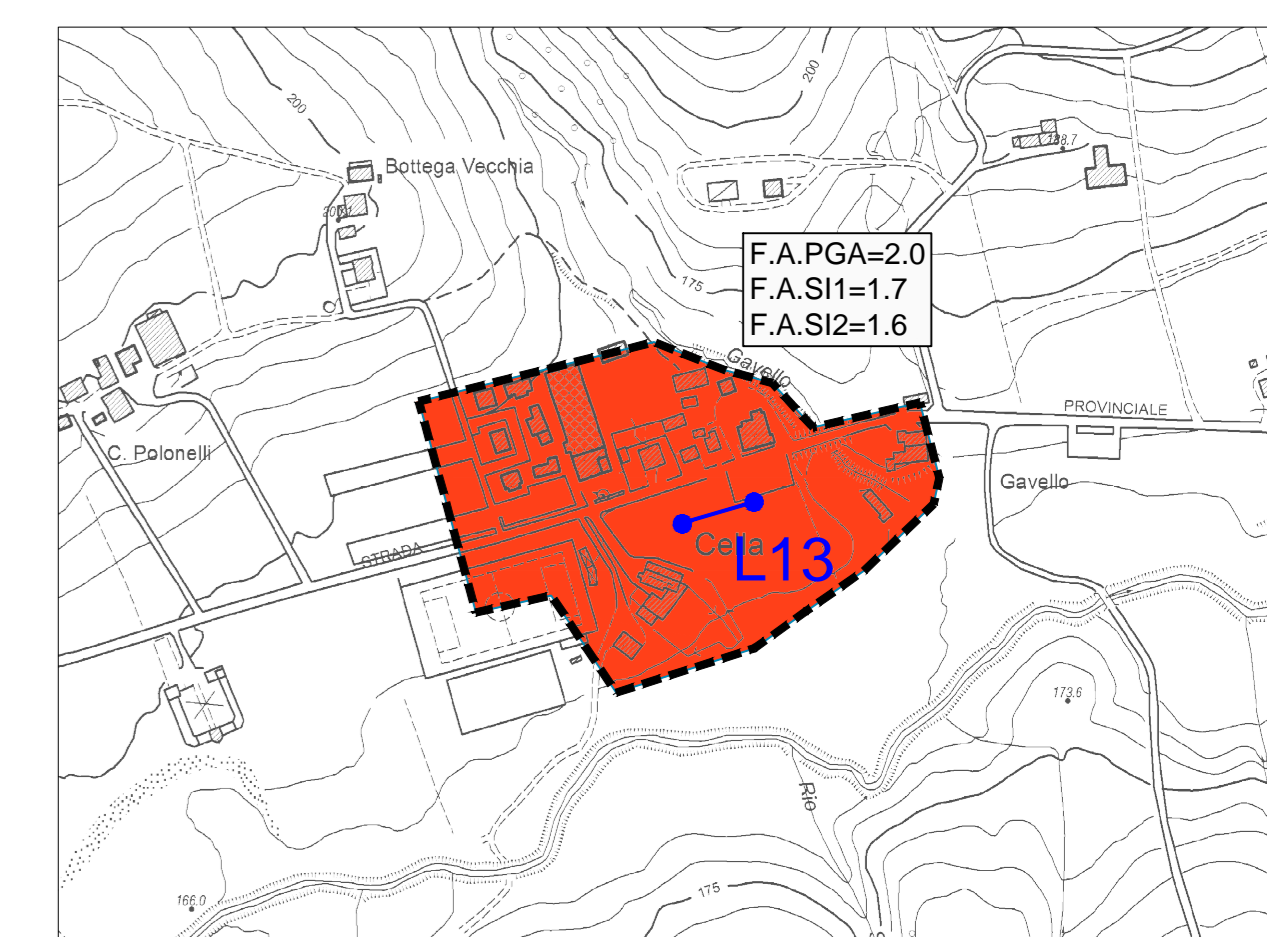
- F.A. PGA = 1,5 - 1,6
- F.A. PGA = 1,7 - 1,8
- F.A. PGA = 1,9 - 2,0
- F.A. PGA = 2,1 - 2,2

ZONE DI ATTENZIONE PER INSTABILITA'

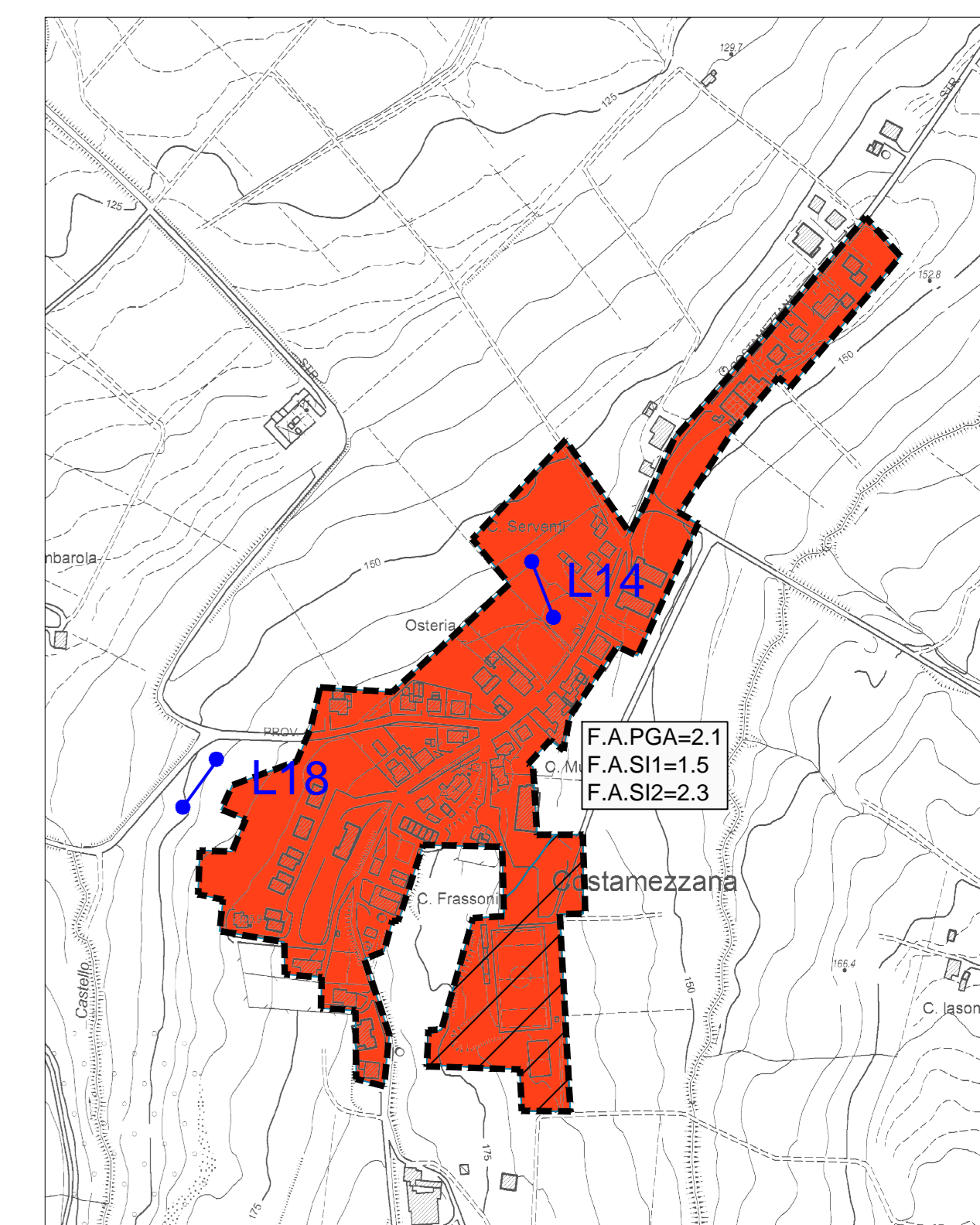
- ZA = zona di attenzione per instabilità di versante - ZONA 2011



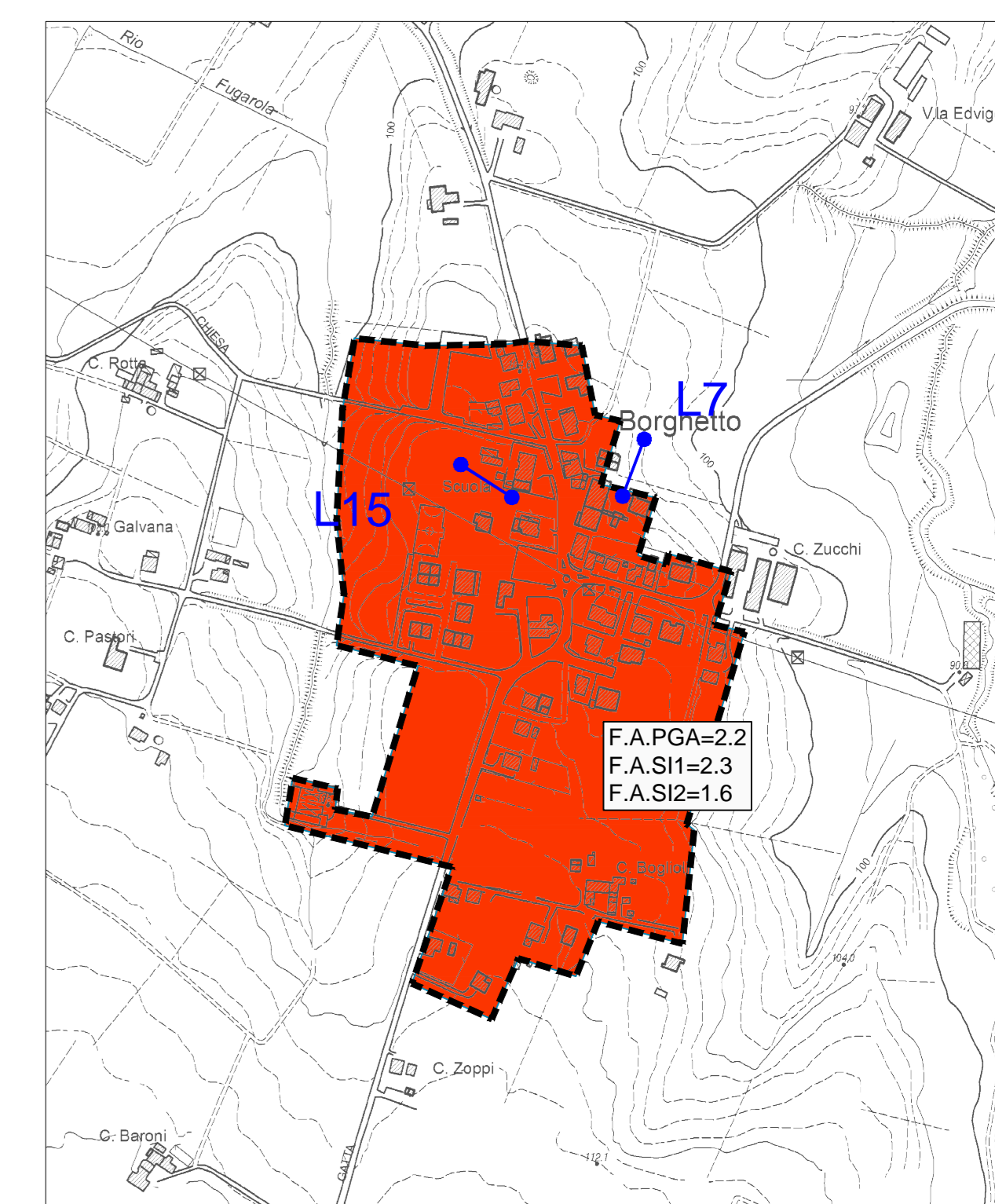
NOCETO CAPOLUOGO (b)



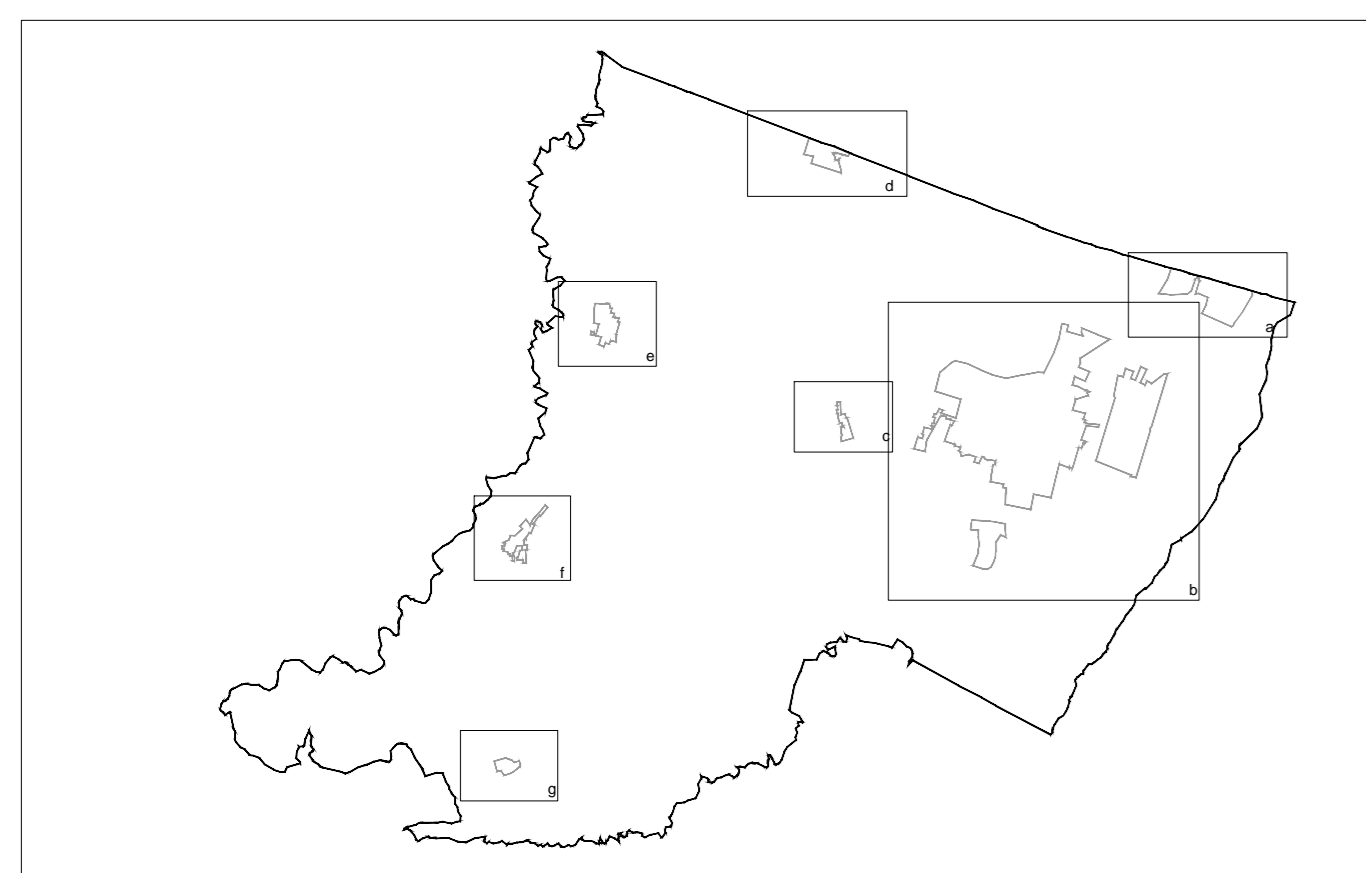
FRAZIONE DI CELLA - SCALA 1:10.000 (g)



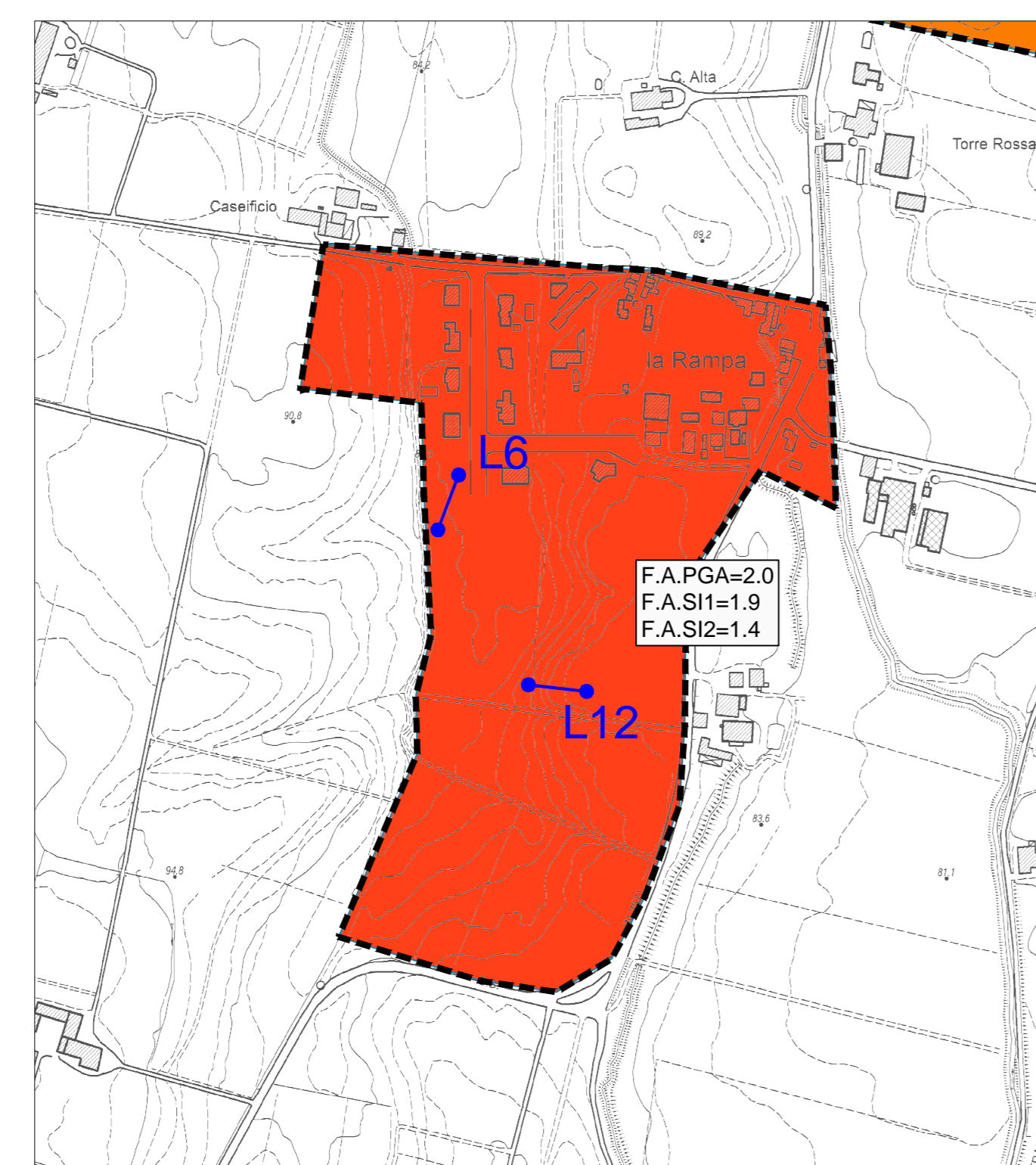
COSTAMEZZANA (f)



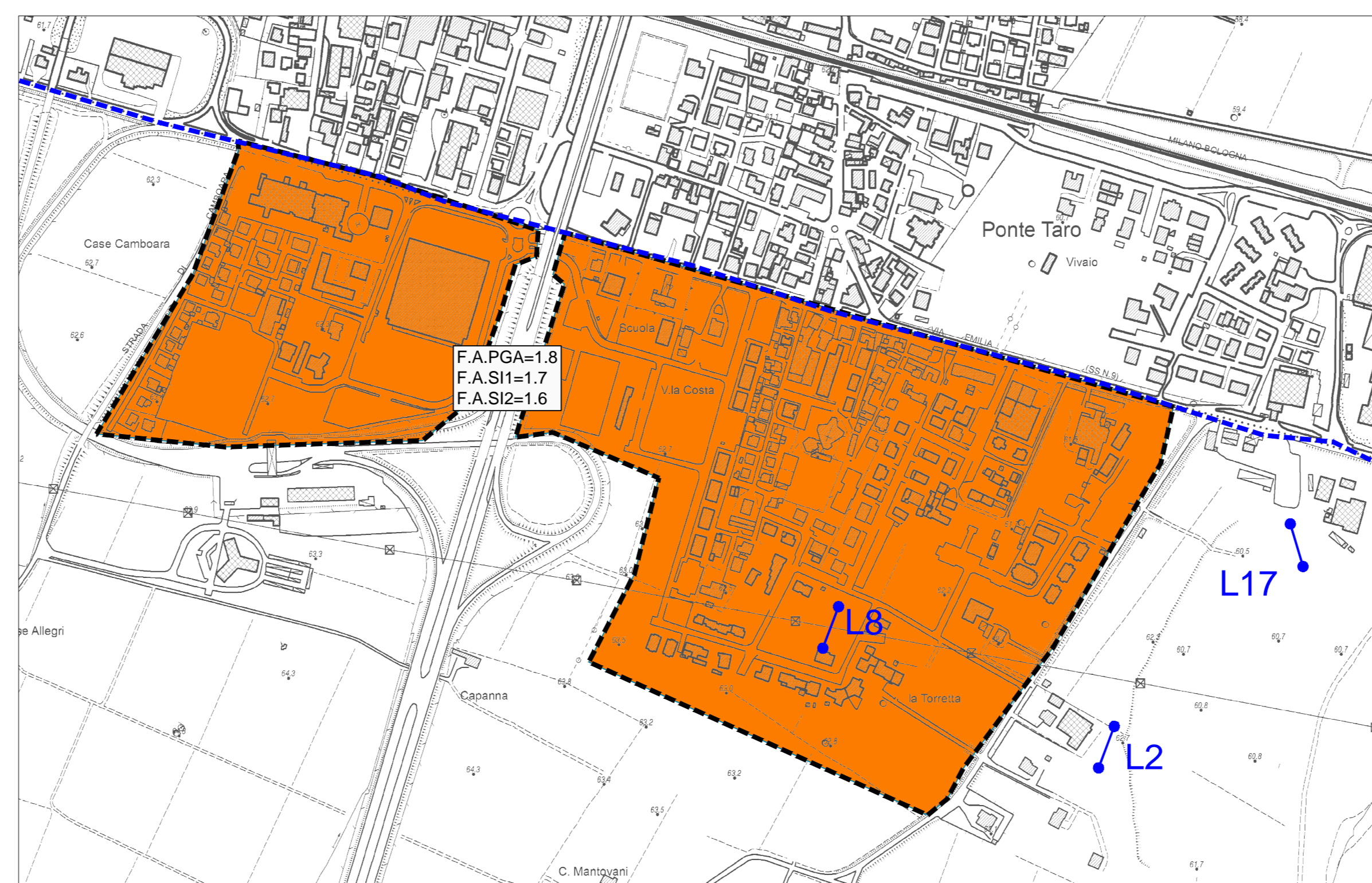
BORGHETTO (e)



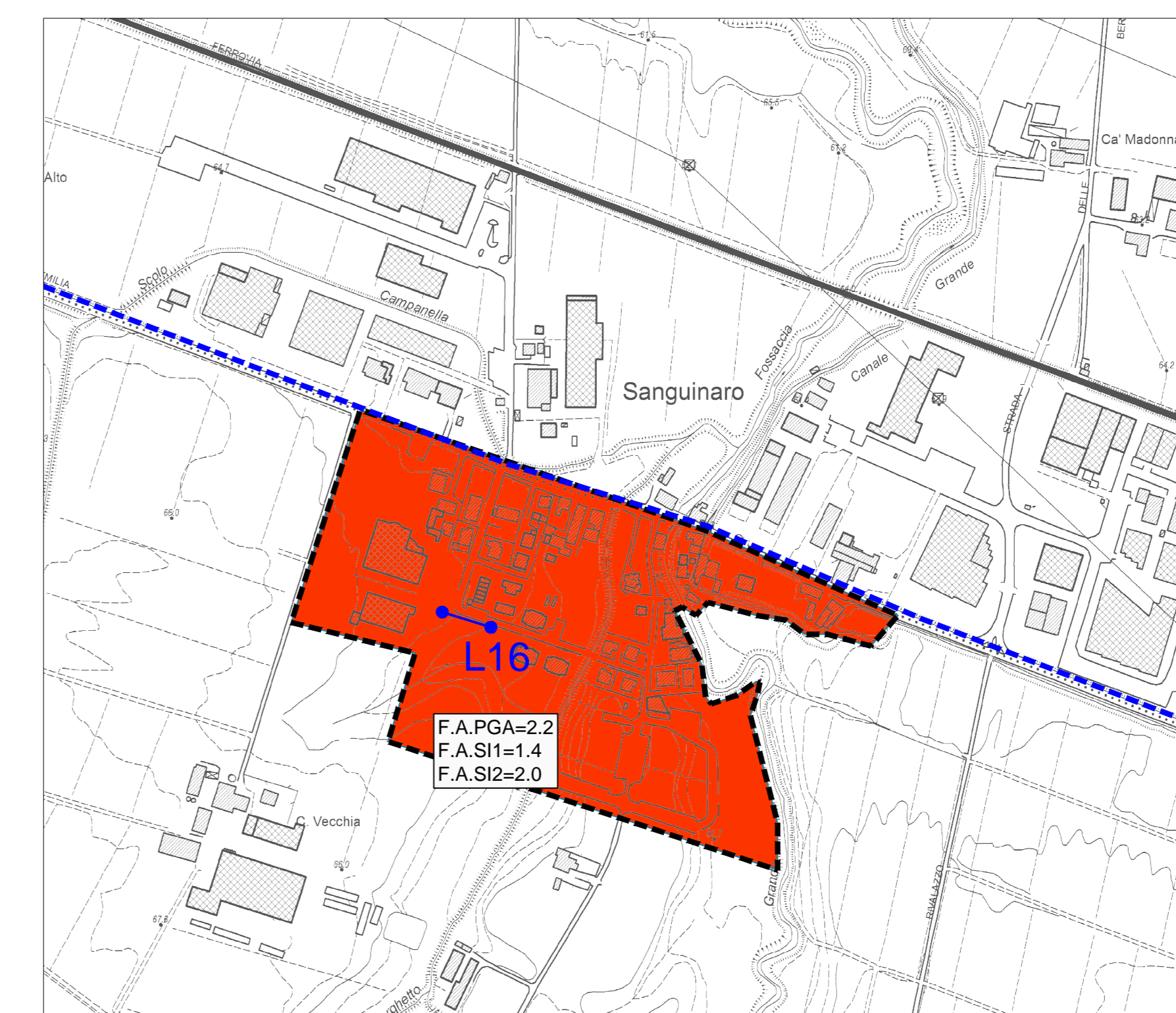
COMUNE DI NOCETO - SCALA 1:100.000



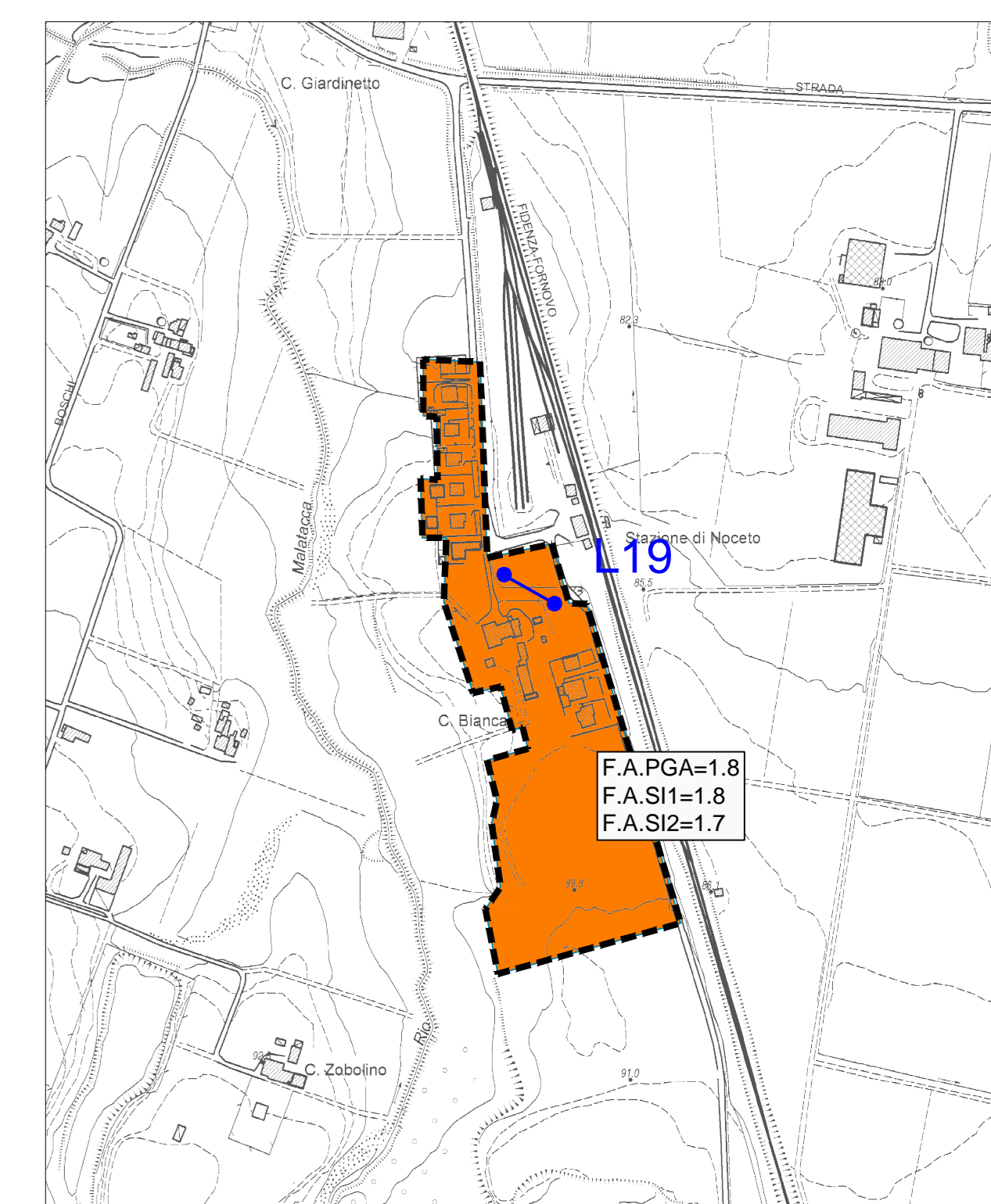
LA RAMPA (b)



CASTELGUELFO (a)



SANGUINARO (d)



LOC. STAZIONE DI NOCETO (c)